

# STUDENT POPULATION



2023-2024 School Year

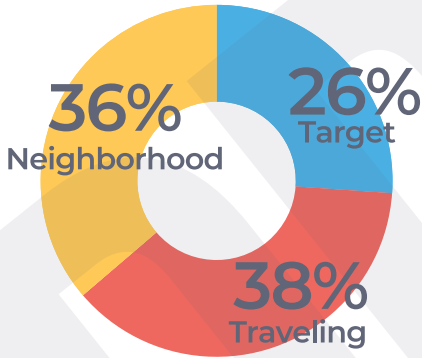
# 8,288\*

## Types of Students

**Target:** Lives in Promise Neighborhood boundaries and is enrolled in a promise school

**Neighborhood:** Lives within Promise Neighborhood boundaries, but is not enrolled in a Promise School.

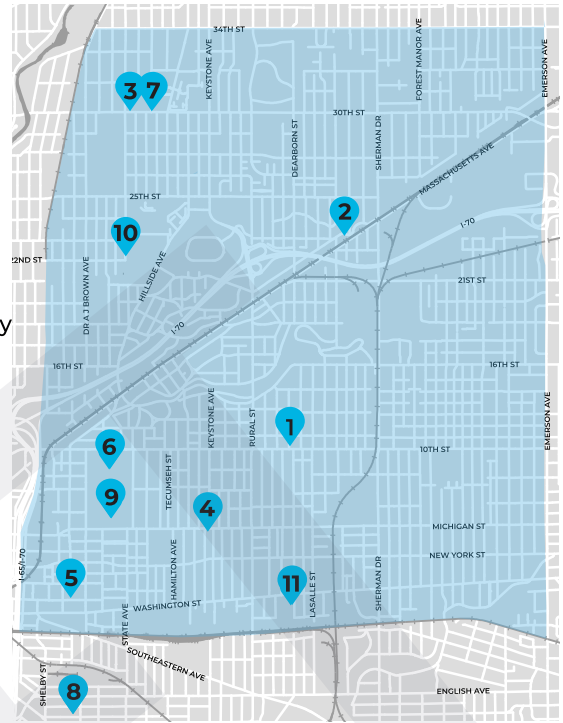
**Traveling:** Enrolled in a Promise School, but does not live within the Promise Neighborhood boundaries.



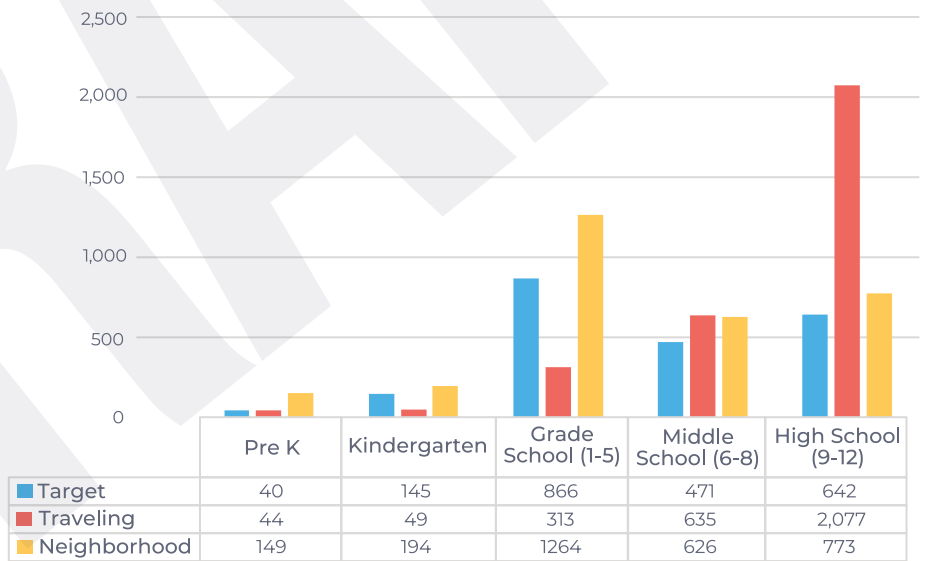
	Target	Neighborhood	Traveling
Lives in IEPN	Yes	Yes	No
Enrolled in a Promise School	Yes	No	Yes

# Promise Schools

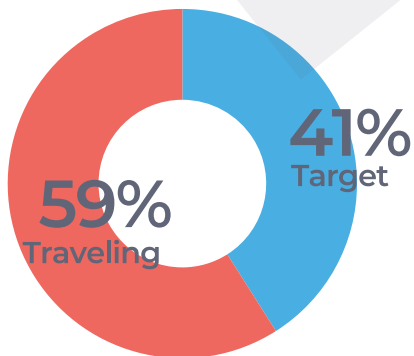
- Brookside Elementary School #54
- James Russell Lowell Elementary
- KIPP Indy Unite Elementary
- Thomas Gregg Neighborhood School
- Washington Irving Neighborhood School
- Harshman Middle School
- KIPP Indy College Prep Middle
- Longfellow Middle School
- Arsenal Technical High School
- KIPP Indy Legacy High
- Purdue Polytechnic High School



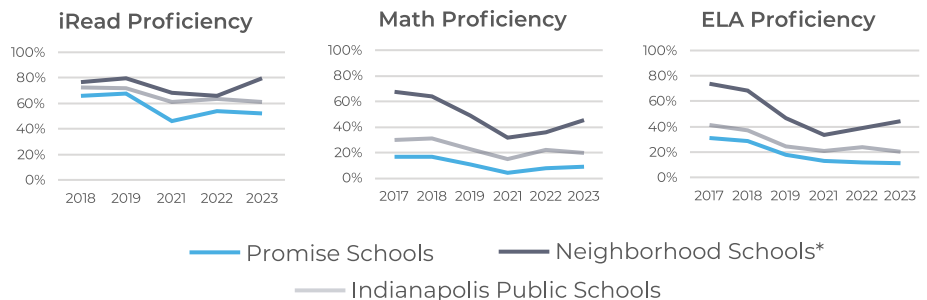
## 2023-2024 Students by Grade & Type<sup>3</sup>



## Promise School Population<sup>3</sup>



## Test Proficiency



\*Neighborhood Schools are located inside the geographic boundary of the Indy East Promise Neighborhood but are not Promise School partners.

<sup>3</sup>- Data Source: PowerSchool and Unified Insights student demographics (IPS), Purdue Polytechnic and KIPP student data not available in current analysis.  
\*Purdue Polytechnic and KIPP student data not available in current analysis.

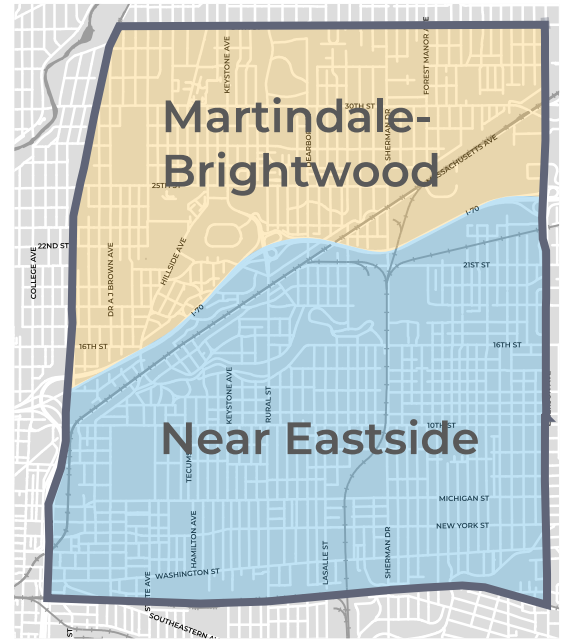
# DATA SNAPSHOT



**Our Promise: Every child in the IndyEast Promise Neighborhood will be ready for college and prepared for a career.**

The IndyEast Promise Neighborhood is a data-driven initiative that tracks student and community progress toward key outcomes. Data on community outcomes is largely based on American Community Survey 5-Year Estimates (federal data collected by the Census Bureau) and student outcomes is either publicly-available data from the Indiana Department of Education or is provided by Indianapolis Public Schools and/or Promise School Partners.

Promise Neighborhoods is a place and strategy focused on improving outcomes for students and neighbors.

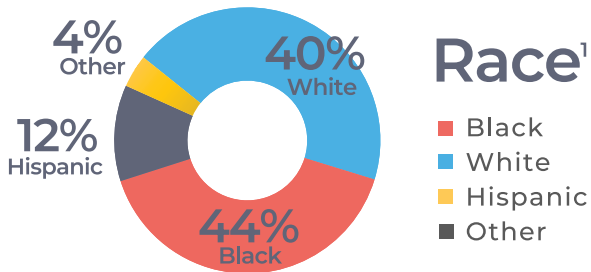


## Boundaries

— IndyEast Promise Neighborhood Boundary  
The Near Eastside and Martindale Brightwood communities join to become the Indy East Promise Neighborhood.

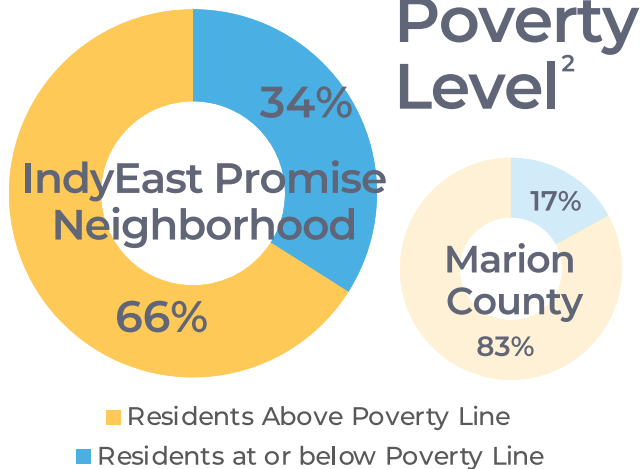
# 53,668 Total Population<sup>1</sup>

## Age<sup>1</sup>

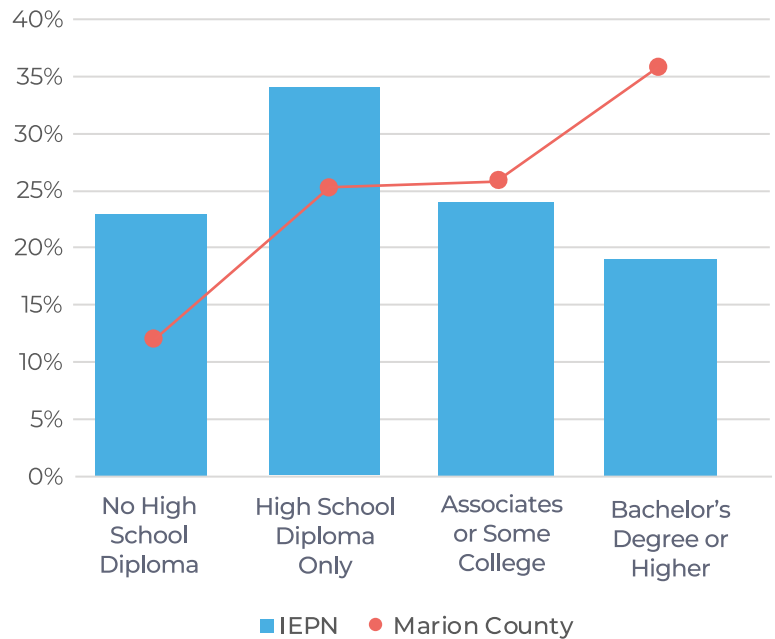


■ Black  
■ White  
■ Hispanic  
■ Other

## Poverty Level<sup>2</sup>



## Educational Attainment<sup>1</sup>



<sup>1</sup> - Data Source: American Community Survey 5-Year Estimates (2022), US Census Bureau (2022 Estimates)  
<sup>2</sup> - Data Source: American Community Survey 5-Year Estimates (2017), US Census Bureau (2017 Estimates)